

bernette Accessory Catalog



Category A

- | | | |
|---|---|--|
| 1 Milan 2
Moscow 2
Milan 3
Moscow 3
Rome 3 | 2 Milan 5
Moscow 5
Rome 5
Milan 7
Moscow 7
Rome 7 | 3 Milan 8
Moscow 8
Rome 8 |
|---|---|--|



Category B

- | | |
|--------------------|--------------------|
| 1 Chicago 5 | 2 Chicago 7 |
|--------------------|--------------------|



Category C

- | |
|-----------------------------------|
| 1 Deco 340
Deco 340plus |
|-----------------------------------|



Category D

- | | |
|---|-------------------------------|
| 1 sew&go 1
sew&go 3
sew&go 5 | 2 sew&go 7
sew&go 8 |
|---|-------------------------------|



Category E

- | |
|-------------------------------------|
| 1 b05 CRAFTER
b05 ACADEMY |
|-------------------------------------|



Category F

- | | |
|---------------------|---------------------|
| 1 b33
b35 | 2 b37
b38 |
|---------------------|---------------------|



Category G

- 1** b70 DECO
- 2** b77
- 3** b79



Chapter 1

Presser Feet for Sewing Machines

General sewing

Zigzag Foot	8
Zigzag Foot for Dual Feed	8
Zigzag Foot with Guide	8
Zigzag Foot with Non-Stick Sole	9
Roller Foot	9
Walking Foot	9
Straight Stitch Foot	10
Straight Stitch Foot for Dual Feed	10

Buttons and Buttonholes

Buttonhole Foot with Slide	11
Button Sew-On Foot	11

Elastic/Stretch Materials

Overlock Foot	12
Overlock Foot for Dual Feed	12

Zippers

Zipper Foot	13
Zipper Foot for Dual Feed	13
Invisible Zipper Foot	13

Hems and Topstitching

Blindstitch Foot	14
Blindstitch Foot for Dual Feed	14
Edgestitch Foot	14
Hemmer Foot	15
Hemmer Foot for Dual Feed	15
Binder Attachment for Pre-folded Bias Tape	15
Adjustable Binder Attachment	16

Decorative Sewing

Embroidery Foot	17
Embroidery Foot with Clear Sole	17
Open Embroidery Foot	17
Open Embroidery Foot for Dual Feed	18
Gathering Foot	18
Ribbon–Couching Foot	18
Cording Foot	19
Cording Foot for Dual Feed	19
Beading and Sequins Foot	19
Pintuck Foot	20
Piping Foot	20
Universal Presser Foot Holder	20

Embroidery

Embroidery Foot	21
Hopper Embroidery Foot	21

Patchwork

Patchwork Foot	22
Patchwork Foot for Dual Feed	22

Quilting

Darning Foot/Embroidery Foot	23
Free Motion Embroidery Foot	23
Ruler Foot	23

Presser Foot Sets

Presser Feet Set Decoration	24
Presser Feet Set b33/b35	24
Presser Feet Set b37/b38	24
Presser Feet Set Quilting	25
Presser Feet Set b77/b79	25
Presser Feet Set Decoration b77/b79	25

Chapter 2

Accessories for Sewing Machines

Accessories for Sewing Machines

Straight Stitch Plate	28
Darning Plate	28
Bobbins	28
Right Seam Guide	29
Finger Guard	29
Fabric-Feeding Aid for Sewing Buttonholes	29

Slide-on Table	30
Pressure Foot Lifter	30
USB Stick	30
Touchscreen Pen	31
Carrying Case for Sewing Machines	31
XL Trolley System	31
Needle Assortment	32

Chapter 3

Accessories for Embroidery Machines

Accessories for Embroidery Machines

Multiple Spool Holder	34
Multiple Spool Holder Extension	34
Chicago Embroidery Hoops	34

Deco340 Embroidery Hoops	35
b70 Series Embroidery Hoops	35
Magnetic Embroidery Hoop	35
BERNINA CutWork Tool	36

Chapter 4

Software

Software	
BERNINA Embroidery Software 9	38

BERNINA Toolbox	39
-----------------	----

Chapter 5

Accessories for Overlockers/Sergers

General sewing	
Standard Presser Foot	43
Standard Presser Foot with Clear Sole	43
Ribbon–Couching Foot	43
Belt-Loop Foot	44
Hems and Topstitching	
Double Fold Binder Attachment #C21	45
Single Fold Binder Attachment #C22	45
Elasticator Foot	45
Blindstitch Foot	46
Hemmer Foot	46
Binder Attachment for Unfolded Bias Tape	46

Decorative Sewing

Piping Foot	47
Beading and Sequins Foot	47
Cording Foot	47
Gathering Foot	47
Lace Foot	48
Hemmer and Lace Foot	48

Presser Foot Sets

Presser Feet Set Cover/Combo	49
Presser Feet Set Overlock/Combo	49

Other Accessories

Cut-Offs Bin	50
BERNINA Tweezers	50
CS Lock Tool	50
Carrying Case for Overlockers/Sergers	51
XL Trolley System	51

Information on the bernette Accessories Catalog

Main Categories

The Machine Overview lists the bernette sewing and embroidery machines as well as the overlockers and divides them into alphabetically labeled categories. These categories indicate which of the accessories are compatible with which machine models. Your bernette specialist dealer will be delighted to assist and support you when it comes to selecting accessories.


Example

1. Find your model in the machine overview and note the category.
2. Find the required accessory in the presser foot list or in the table of contents, and check compatibility based on category.


Category F

1 b33
 b35

2 b37
 b38



Accessories for the b38 are assigned to category F2.



This Walking Foot is compatible with the b38.

502 020 06 03*	A	B	D	F1
502 060 14 11				F1
502 060 13 50				F2
502 021 02 93	A	B	D	E1

* While stocks last

Equipment and Scope of Delivery

In this accessories catalog, exemplary images are used for illustration purposes. The products shown in the pictures do not necessarily correspond to the actual scope of delivery. The product may be subject to change depending on the country of delivery.

For technical reasons and in order to improve the product, changes may be made to the equipment of the machine and the scope of delivery at any time and without prior notice.

You will find the latest version of the accessory catalog in other languages at: www.bernette.com/accessories



Presser Feet for Sewing Machines



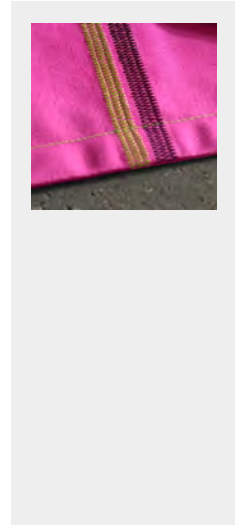
www.bernette.com/shirt-blouse

General sewing

Zigzag Foot



The Zigzag Foot is a real all-rounder and is suitable for the most common sewing activities. It is also optimal for special sewing projects. Besides very simple attractive decorative stitches, it is perfectly suited for realizing patchwork ideas.

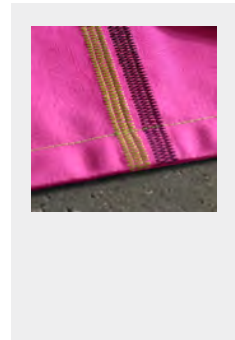


502 020 59 96	A1		D1
502 020 60 07	A2		
502 020 69 03	A3	B	D2
502 060 14 08			F1
502 060 14 09			F2
502 020 93 64			G2,3
502 021 03 17			E

Zigzag Foot for Dual Feed

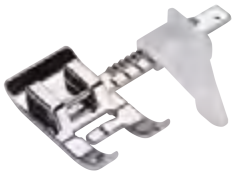


The Zigzag Foot for Dual Feed features a recess on the rear side of the presser foot to activate the integrated dual feed. This ensures a consistent feed with multiple layers of fabric and difficult-to-feed materials.

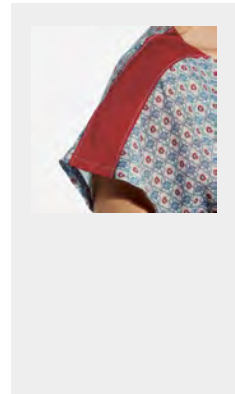


502 020 92 89			G2,3
---------------	--	--	------

Zigzag Foot with Guide



The Zigzag Foot with Guide turns precise sewing into child's play. The most common seam allowances are marked on the guide arm, and the lateral guide ruler can be quickly adjusted accordingly.



502 021 03 12	A	B	D	E	G2,3 [■]
502 060 14 90					F2

[■] G2,3: In combination with the Universal Presser Foot Holder 502021.03.91

General sewing

Zigzag Foot with Non-Stick Sole



The presser foot sole with a non-stick coating provides an even better ride over materials that are difficult to work with, such as leather, plastic, vinyl or the like.

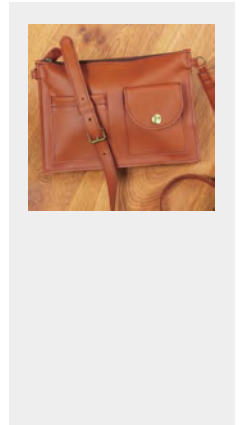


502 060 14 10					F1
502 060 13 47					F2
502 020 93 04					G2,3
502 021 02 92	A	B	D	E	

Roller Foot



The Roller Foot is a specialist when sewing on difficult-to-feed materials. Thanks to its roller on the underside of the foot, it glides effortlessly over materials such as leather and vinyl, as well as fabrics with a strong surface structure.



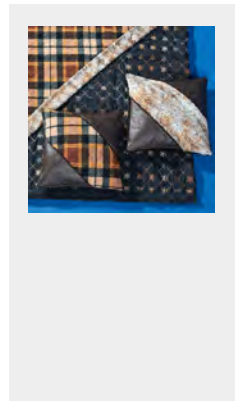
502 021 03 13	A	B	D	E	G2,3 [■]
502 060 14 84					F1
502 060 14 85					F2

[■] G2,3: In combination with the Universal Presser Foot Holder 502021.03.91

Walking Foot



Fabrics that are difficult to work with are best sewn with the Walking Foot. It supports the fabric feed with a second feed dog on the top of the foot. The sewing project is moved in synchronization with the lower feed dog to ensure a smooth sewing process.



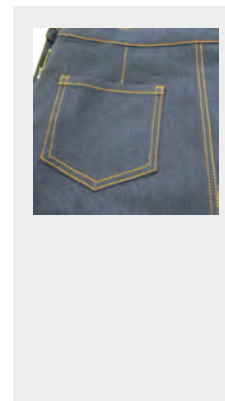
502 060 14 11					F1
502 060 13 50					F2
502 021 02 93	A	B	D	E	

General sewing

Straight Stitch Foot



This presser foot is excellent for all straight stitch work. The small stitch hole supports the material while sewing.

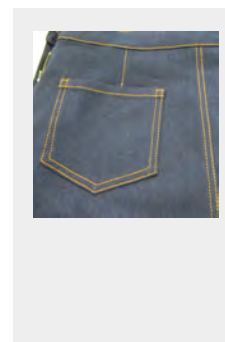


502 060 13 51						F1
502 060 13 52						F2
502 021 02 94	A	B		D	E	

Straight Stitch Foot for Dual Feed



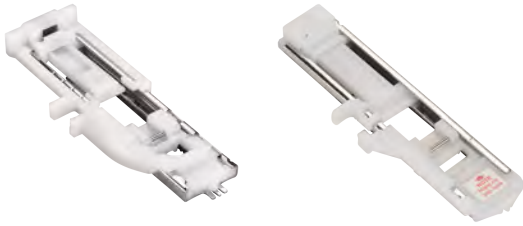
The Straight Stitch Foot for Dual Feed features a recess on the rear side of the presser foot to activate the integrated dual feed. This ensures a consistent feed with multiple layers of fabric and difficult-to-feed materials.



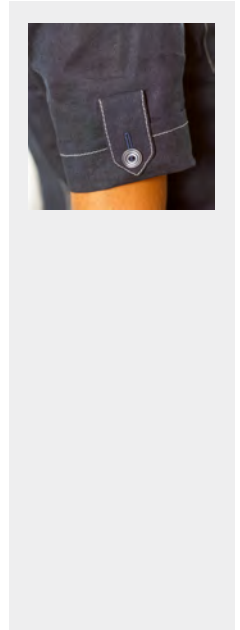
502 020 92 94						G2,3
---------------	--	--	--	--	--	------

Buttons and Buttonholes

Buttonhole Foot with Slide



The buttonholes can be sewn easily in different versions, either with or without using yarn reinforcement. Any number of buttonholes can be sewn at exactly the same length.



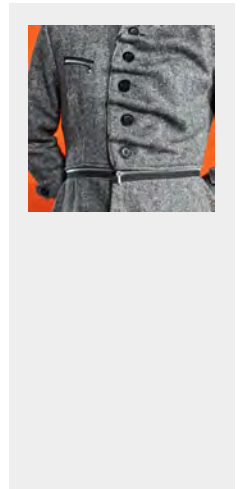
502 020 59 97	A1 [■]		D1 [□]
502 020 70 20	A3	B	
502 020 87 86			D2
502 060 13 53			F1
502 060 13 54			F1
502 060 13 55			F2
502 020 92 98			G2,3
502 021 03 18	A1,2 [◆]		D1 [○] E

■ A1: Milan 2, Moscow 2, Rome 3
 □ D1: sew&go 1, 3
 ◆ A1: Milan 3, Moscow 3
 ○ D1: sew&go 5

Button Sew-On Foot



Besides buttons in different sizes, this presser foot can also be used to sew on rings or hooks. The Button Sew-On Foot has a non-slip sole which prevents the button from slipping away.



502 020 59 98*	A	B	D
502 060 13 56			F1
502 060 13 57			F2
502 020 92 91			G2,3
502 021 02 95	A	B	D E

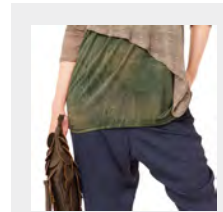
* While stocks last

Elastic/Stretch Materials

Overlock Foot



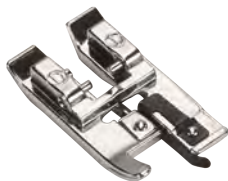
The Overlock Foot allows you to professionally finish edges and to sew overlock-like seams. It is likewise excellent for creating decorative cuffs and hems on the most common knit fabrics.



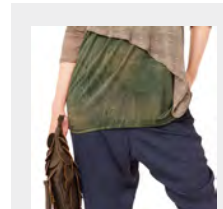
502 020 59 91	A1			D1
502 020 73 08*	A2,3	B		D2
502 060 13 58				F1
502 060 13 59				F2
502 021 03 15	A2,3	B	D2	E

* While stocks last

Overlock Foot for Dual Feed



The Overlock Foot for Dual Feed features a recess on the rear side of the presser foot to activate the integrated dual feed. This allows an even feed with several layers of fabric. With elastic fabrics, the waving of the seam is reduced.



502 020 92 97

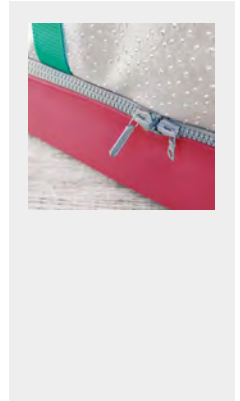
G2,3

Zippers

Zipper Foot



Thanks to its narrow shape, zippers of different types are sewn in very easily. The fabric is fed evenly while sewing closely along the rows of teeth.

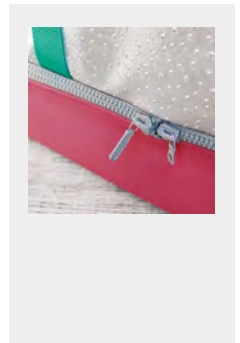


502 060 13 60					F1
502 060 13 61					F2
502 021 03 19	A	B		D	E

Zipper Foot for Dual Feed



The Zipper Foot for Dual Feed features a recess on the rear side of the presser foot to activate the integrated dual feed. This ensures a consistent feed with multiple layers of fabric and difficult-to-feed materials.

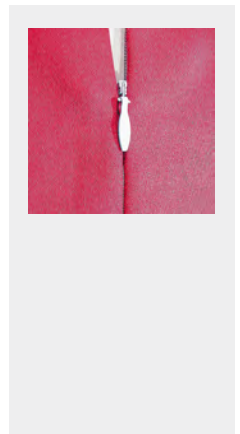


502 020 92 90					G2,3
---------------	--	--	--	--	------

Invisible Zipper Foot



This foot is simply perfect to sew in zippers. Due to the concealed processing, the zipper becomes invisible which looks particularly elegant on the sewing project.



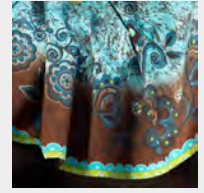
502 060 13 62					F1
502 060 13 63					F2
502 020 93 05					G2,3
502 021 02 96	A	B		D	E

Hems and Topstitching

Blindstitch Foot



This foot is best suited to sew blind hems or to topstitch edges. The stitches only pierce the hem so that the stitch holes are hardly visible on the right side of the fabric.



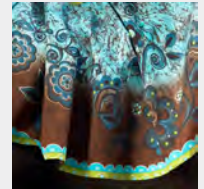
502 020 60 09*	A2,3	B		D2
502 020 59 93*	A1			D1
502 060 13 64				F1
502 060 13 65				F2
502 021 02 97	A	B	D	E

* While stocks last

Blindstitch Foot for Dual Feed



The Blindstitch Foot for Dual Feed features a recess on the rear side of the presser foot to activate the integrated dual feed. This ensures a consistent feed with difficult-to-feed materials.



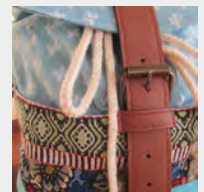
502 020 93 01

G2,3

Edgestitch Foot



This presser foot with guide facilitates topstitching edges, hems and pleats; it is helpful when sewing on lace or ribbons and to reinforce edges. The guide lets you sew perfect seams and hems running parallel to the edge.



502 060 13 66				F2	
502 021 02 98	A	B	D	E	G2,3 [■]

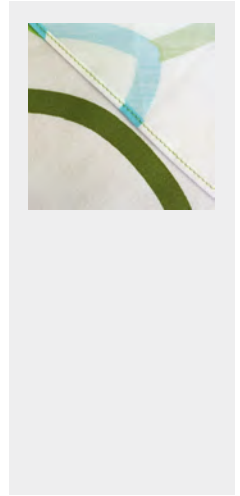
[■] G2,3: In combination with the Universal Presser Foot Holder 502021.03.91

Hems and Topstitching

Hemmer Foot



In order to create professional hems, this special presser foot is perfect. It wraps the fabric twice. This creates a narrow circular hem which is then neatly fixed with the straight stitch by the needle.

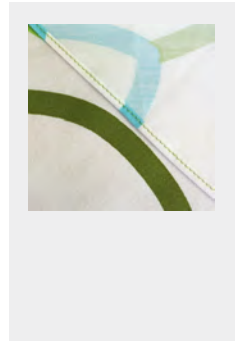


502 020 59 95	A1		D1	
502 060 13 67				F1
502 060 13 68				F2
502 040 51 13				
502 040 60 29	A1,3	B1,3		
502 021 02 99	A2,3	B	D2	E

Hemmer Foot for Dual Feed



The Hemmer Foot for Dual Feed features a recess on the rear side of the presser foot to activate the integrated dual feed. This ensures a consistent feed with multiple layers of fabric and difficult-to-feed materials.

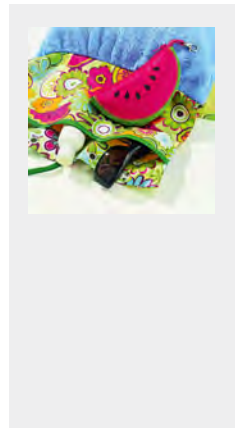


502 020 92 95				G2,3
---------------	--	--	--	------

Binder Attachment for Pre-folded Bias Tape



The Binder Attachment serves the purpose to bind edges with pre-folded bias tapes which are sewn on with a practical or a decorative stitch.



502 060 13 69				F1	
502 060 13 70				F2	
502 021 03 00	A1		D1	E	G2,3 [■]

[■] G2,3: In combination with the Universal Presser Foot Holder 502021.03.91

Hems and Topstitching

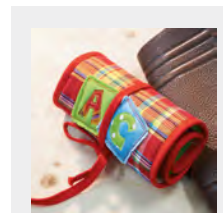
Adjustable Binder Attachment



502 021 03 01 A1 D1 E G2,3

▪ G2,3: In combination with the Universal Presser Foot Holder 502021.03.91

Thanks to the adjustable Binder Attachment, binding edges with pre-folded tapes is performed in no time at all. For precise sewing results, the tape and the sewing material are guided along the edge of the presser foot.

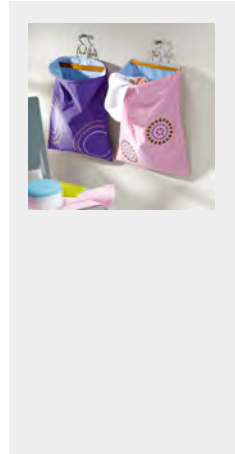


Decorative Sewing

Embroidery Foot



The Embroidery Foot is a real expert when it comes to embroidering and decorating; simply perfect for sewing beads, decorative stitches and to sew on appliqués.



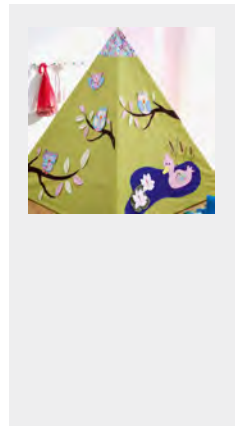
502 020 59 92*	A1		D1		
502 060 13 71					F1
502 020 92 99					G2,3
502 021 03 20	A1		D1	E	

* While stocks last

Embroidery Foot with Clear Sole



The clear sole provides a good view of the sewing project at any time. Decorative stitches, beads, appliqués as well as sewing free blanket stitches can therefore be performed particularly successfully.



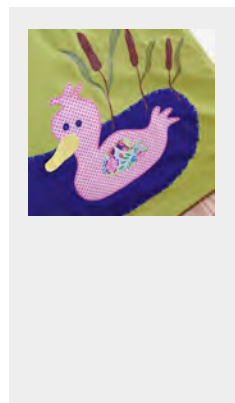
502 060 13 77					F1
502 060 13 78					F2
502 021 03 21	A	B	D	E	G2,3 [■]

■ G2,3: In combination with the Universal Presser Foot Holder 502021.03.91

Open Embroidery Foot



This foot is used to create appliqué and embroidery designs and for sewing over lines and patterns. The open shape ensures a clear view of the seam which makes it ideal for sewing on ribbons and tapes.



502 060 13 72					F1
502 060 13 73					F2
502 021 03 02	A	B	D	E	

Decorative Sewing

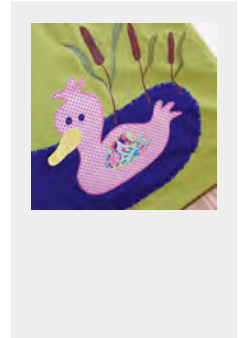
Open Embroidery Foot for Dual Feed



502 020 93 02

G2,3

The Open Embroidery Foot for Dual Feed features a recess on the rear side of the presser foot to activate the integrated dual feed. This ensures a consistent feed with multiple layers of fabric and difficult-to-feed materials.



Gathering Foot



502 060 13 74

F1

502 060 13 75

F2

502 020 92 92

G2,3

502 021 03 03

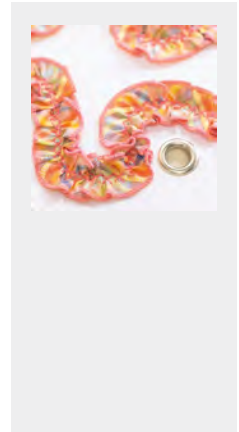
A

B

D

E

Since its sole does not rest flat on the feed dog, the Gathering Foot feeds the fabric unevenly. This creates a charming gathering effect while sewing.



Ribbon-Couching Foot



502 021 03 04

A

B

D

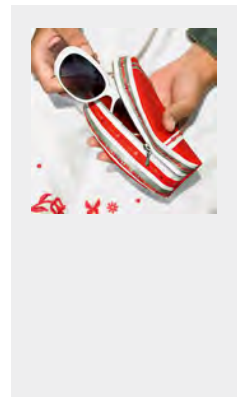
E

G2,3[■]

502 060 13 76

F2

To sew on sequin and satin ribbons. The adjustable guide holds the ribbons in place. This prevents them from slipping when being sewn on.



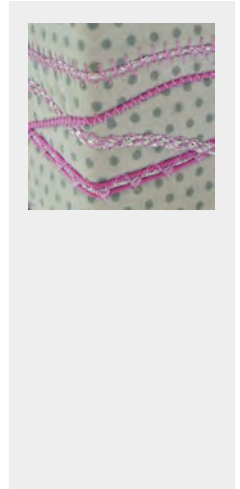
[■] G2,3: In combination with the Universal Presser Foot Holder 502021.03.91

Decorative Sewing

Cording Foot



The Cording Foot is designed to facilitate sewing on thin cords or strings. The grooves on the bottom of the foot allow several cords to be sewn on in one go.



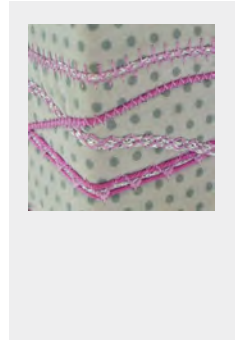
502 020 59 90*	A1		D	
502 060 13 79				F1
502 060 13 80				F2
502 020 60 05*	A2,3	B		
502 021 03 05	A	B	D	E

* While stocks last

Cording Foot for Dual Feed



The Cording Foot for Dual Feed features a recess on the rear side of the presser foot to activate the integrated dual feed. This ensures a consistent feed with difficult-to-feed materials.

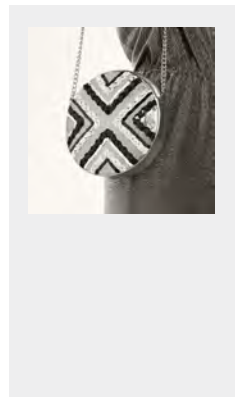


502 020 92 96					G2,3
----------------------	--	--	--	--	------

Beading and Sequins Foot



For creative work with beaded or sequined ribbons. The groove in the center of the foot serves as a guide as well as a support for sewing on cords, beaded and sequined ribbons.



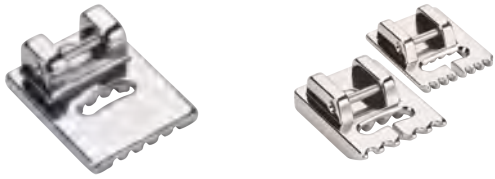
502 021 03 06	A	B	D	E	G2,3 [■]
502 060 14 89					F2

Combination

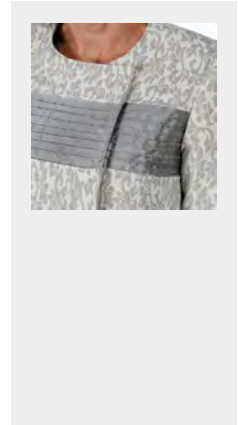
[■] G2,3: In combination with the Universal Presser Foot Holder 502021.03.91

Decorative Sewing

Pintuck Foot



The Pintuck Foot with 5 grooves is designed to sew pintucks with a twin needle. With the help of the grooves, parallel pintucks can be sewn.



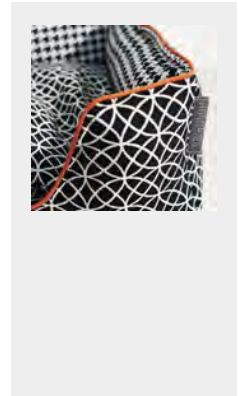
502 021 03 07	A	B	D	E	G2,3 [■]	
502 060 14 86					F1	
502 060 14 87					F2	Combination

■ G2,3: In combination with the Universal Presser Foot Holder 502021.03.91

Piping Foot



The Piping Foot with its two guide grooves is perfectly suited for creating and sewing on piping. This is how highlights are added to home textiles or clothing. The foot also masters the simultaneous sewing on of two cords effortlessly.



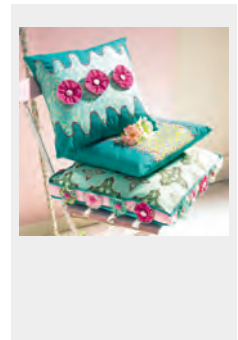
502 021 03 08	A	B	D	E	G2,3 [■]	
502 060 14 88					F2	

■ G2,3: In combination with the Universal Presser Foot Holder 502021.03.91

Universal Presser Foot Holder



To secure a multitude of application-oriented presser feet for general and decorative hemming and top stitch work.



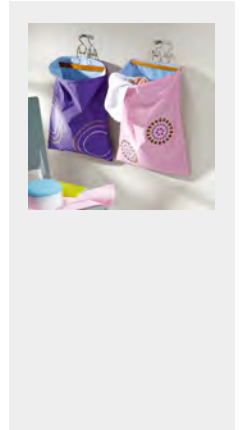
502 021 03 91					G2,3	
----------------------	--	--	--	--	------	--

Embroidery

Embroidery Foot



The Embroidery Foot is a real expert when it comes to embroidering and decorating; simply perfect for sewing beads, decorative stitches and to sew on appliqués.

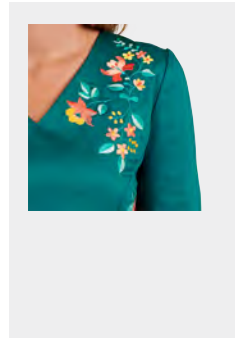


502 060 06 52	C	
502 060 08 72	C	
502 020 81 80	B2	
502 020 93 03		G1,3

Hopper Embroidery Foot



The Hopper Embroidery Foot is the perfect choice when embroidering on pile and bulky fabrics, such as terrycloth. Due to the spring mechanism, the material to be embroidered is optimally pressed down, and at the same time, the movability of the foot compensates for uneven areas, such as with puffy fonts or multi-layer quilts, which results in a beautiful stitch formation.



502 020 93 26		G1,3
---------------	--	------

Patchwork

Patchwork Foot



This foot is ideal for patchwork projects with exact seam allowances of 1/4 and 1/8 inch. The fabric edges can be guided either along the foot or along the edge of the seam guide. This makes precise sewing very simple.



502 020 70 52*	A	B				with Guide
502 020 60 02*			D			without Guide
502 060 13 81					F1	1/4" with Guide
502 060 13 82					F2	with Guide
502 021 03 09	A	B	D	E	G2,3 [■]	with Guide

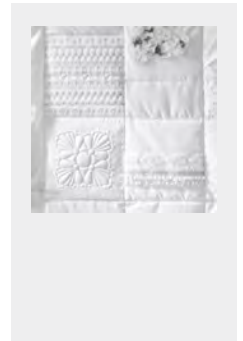
* While stocks last

■ G2,3: In combination with the Universal Presser Foot Holder 502021.03.91

Patchwork Foot for Dual Feed



The Patchwork Foot for Dual Feed features a recess on the rear side of the presser foot to activate the integrated dual feed. This ensures a consistent feed with multiple layers of fabric and difficult-to-feed materials.

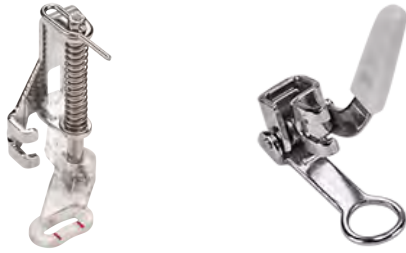


502 020 92 93

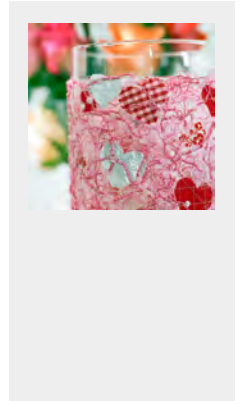
G2,3

Quilting

Darning Foot/Embroidery Foot

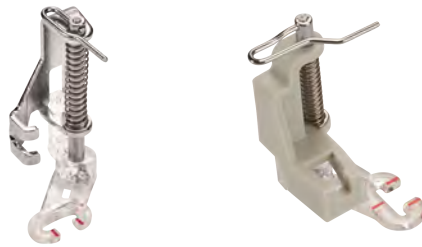


It is an expert when it comes to free-motion sewing and is best suited for darning holes and tears. Moreover, the darning process can be facilitated with the help of an embroidery hoop, as the hoop provides a stabilizing effect. The foot can also be used to create attractive decorations such as lace or monograms.

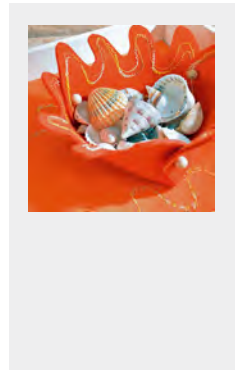


502 021 03 10	A	B	E
502 060 13 83			F1
502 060 13 84			F2

Free Motion Embroidery Foot



The open embroidery sole offers a clear view of the area to be embroidered. Precise and creative free-motion projects such as monogram and Richelieu embroidery as well as thread painting can be accomplished with ease. It is also excellent for contour quilting and free-motion quilting of tiny details (microstippling).

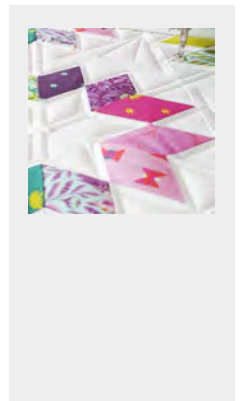


502 060 13 85			F2
502 020 93 00	A	B	D2 E G2,3

Ruler Foot



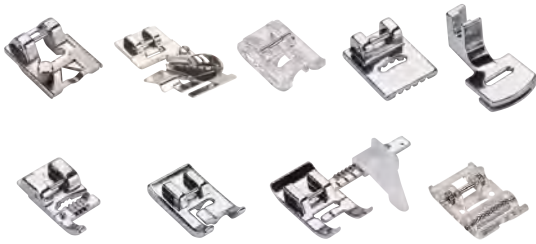
This foot allows you to sew along plexiglas rulers to create decorative quilt designs such as lines, feathers, circles etc.



502 060 14 93			F2
502 021 03 87	A	B	D E
502 021 03 88			G2,3

Presser Foot Sets

Presser Feet Set Decoration



This set for the sewing machines b05 CRAFTER, b05 ACADEMY and selected models of the sew&go and Milan series consists of 9 presser feet for special stitches and decorative sewing work.

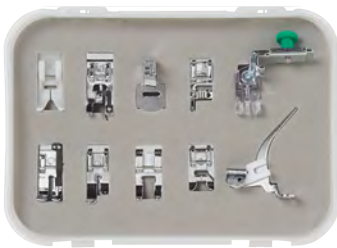
Set Contents

- Ribbon–Couching Foot
- Binder Attachment for Pre-folded Bias Tape
- Beading and Sequins Foot
- Pintuck Foot
- Gathering Foot
- Cording Foot
- Piping Foot
- Zigzag Foot with Guide
- Roller Foot

502 021 03 14 A1 D1 E



Presser Feet Set b33/b35



This set for the sewing machines b33 and b35 contains 10 useful presser feet for special stitches and sewing work.

Set Contents

- Zigzag Foot with Non-Stick Sole
- Invisible Zipper Foot
- Overlock Foot
- Gathering Foot
- Cording Foot
- Patchwork Foot with Guide
- Straight Stitch Foot
- Open Embroidery Foot
- Embroidery Foot
- Darning Foot/Embroidery Foot

502 060 14 16 F1



Presser Feet Set b37/b38



This set for the sewing machines b37 and b38 contains 10 useful presser feet for special stitches and sewing work.

Set Contents

- Zigzag Foot with Non-Stick Sole
- Invisible Zipper Foot
- Hemmer Foot
- Gathering Foot
- Cording Foot
- Patchwork Foot with Guide
- Straight Stitch Foot
- Edgestitch Foot
- Ribbon–Couching Foot
- Darning Foot/Embroidery Foot

502 060 14 17 F2



Presser Foot Sets

Presser Feet Set Quilting



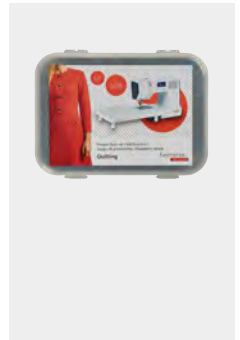
This set for the sewing machines b37/b38 contains 6 useful accessories for creative quilting projects.

Set Contents

- Darning Foot/Embroidery Foot
- Edgestitch Foot
- Straight Stitch Foot
- Free Motion Embroidery Foot
- Walking Foot
- Right Seam Guide

502 060 14 28

F2



Presser Feet Set b77/b79



This set for the sewing and embroidery machines b77 and b79 contains 8 useful presser feet for special stitches and sewing work.

Set Contents

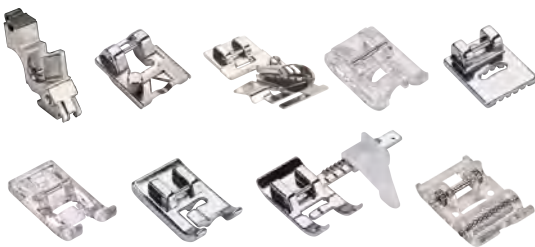
- Gathering Foot
- Invisible Zipper Foot
- Patchwork Foot for Dual Feed
- Straight Stitch Foot for Dual Feed
- Hemmer Foot for Dual Feed
- Cording Foot for Dual Feed
- Open Embroidery Foot for Dual Feed
- Zigzag Foot with Non-Stick Sole

502 020 93 06

G2,3



Presser Feet Set Decoration b77/b79



This set for the sewing and embroidery machines b77 and b79 contains 9 useful presser feet for special decorative stitches and sewing work.

Set Contents

- Universal Presser Foot Holder
- Ribbon-Couching Foot
- Binder Attachment for Unfolded Bias Tape
- Beading and Sequins Foot
- Pintuck Foot
- Embroidery Foot with Clear Sole
- Piping Foot
- Zigzag Foot with Guide
- Roller Foot

502 021 03 92

G2,3





Accessories for Sewing Machines



www.bernette.com/red-dress

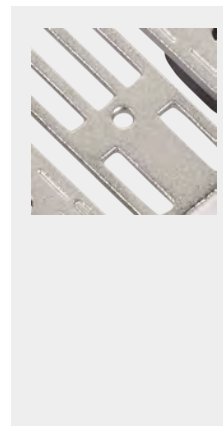
Accessories for Sewing Machines

Straight Stitch Plate



The Straight Stitch Plate can be used for straight stitch and embroidery work as well as for CutWork projects. In combination with presser feet that have a small opening, a perfect stitch formation for straight stitches is achieved.

Round stitch hole for straight stitch and other creative work.



502 020 93 14*

G2,3

502 021 04 36

G2,3

502 021 04 37

E

* While stocks last

Darning Plate



This Darning Plate is supportive when darning holes and tears. It prevents the fabrics from being pulled in while sewing. And it can also be used to sew on buttons.

502 020 74 86

D1

Bobbins



The bernette hook system requires its own bobbin for the bobbin thread, either for sewing or for embroidering.

502 060 13 90

F1

10 pcs.

502 060 13 92

C

F2

10 pcs.

502 020 93 11

B

G

10 pcs.

502 021 03 23

A

D

E

10 pcs.

Accessories for Sewing Machines

Right Seam Guide



The practical seam guide makes it easy to sew parallel seams at the same distance from each other. Moreover, it serves as a reliable guide when topstitching and hemming. This ensures that even demanding sewing jobs are performed neatly and professionally.

502 020 93 13										G2,3
502 060 13 86										F
502 021 03 40	A	B		D	E					

Finger Guard



The Finger Guard is a simple safety device which protects the fingers from injury. Especially for children and sewing beginners it is a perfect completion. The Finger Guard can be used with most sewing feet and is simply fitted to the shank.

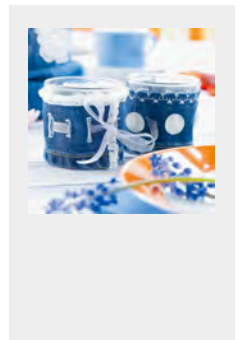
502 021 03 22	A	B		D	E	F1				G2,3
----------------------	---	---	--	---	---	----	--	--	--	------

Fabric-Feeding Aid for Sewing Buttonholes



In combination with the Buttonhole Foot with Slide, this aid improves the feed when sewing buttonholes on thick and fluffy materials, as well as on edges.

502 060 13 87										F2
----------------------	--	--	--	--	--	--	--	--	--	----

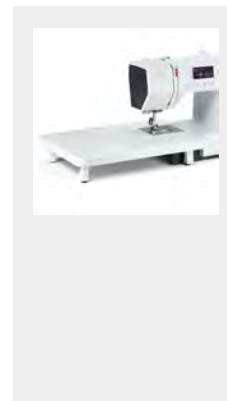


Accessories for Sewing Machines

Slide-on Table



The Slide-On Table makes it possible to extend the already existing work surface and is a convenient support with larger sewing projects.



502 060 13 88

F2

502 020 93 19

G2,3

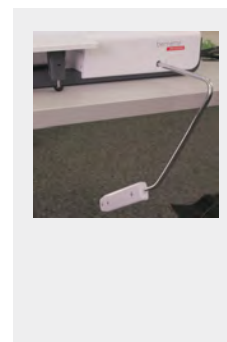
502 021 03 24

E

Pressure Foot Lifter



With the help of a knee lifter, the presser foot is lifted and the feed dog is lowered at the same time. This also increases the gap between stitch plate and presser foot, and leaves both hands free to guide your project.



502 020 93 15

G2,3

USB Stick



The USB stick is a handy portable storage medium to store data and embroidery designs.

502 060 08 87

B2

C

104 081 70 00

G1,3

Accessories for Sewing Machines

Touchscreen Pen



For easy operation of the touchscreen on sewing and embroidery machines. Using the Touchscreen Pen helps keep the screen clean.



502 020 93 20

G

Carrying Case for Sewing Machines



Keep your sewing machine and embroidery module in tip-top condition while you're traveling. The inner compartments provide additional space for storing accessories.

502 020 62 78	A	B	D	E	F	
030 895 51 03		B2				
030 895 50 04		B2				G1,3

XL Trolley System



The practical trolley and embroidery-module bag are very sturdy, and are perfect for transporting your machine when you're on the go. Numerous inner and outer pockets offer plenty of room for accessories. Robust wheels and an extendable telescopic handle allow you to pull your sewing machine and attached embroidery module behind you with ease. The side handles are also convenient when loading and unloading the bags. The embroidery-module bag can be attached to the trolley's telescopic handle or carried separately with the adjustable shoulder strap.



036 180 70 00

G



bernina.com/XL-trolley

Accessories for Sewing Machines

Needle Assortment



The BERNINA Needle Assortment contains high-quality needles of various types and sizes for different materials and applications.



bermina.com/needle-assortment



Accessories for Embroidery Machines



www.bernette.com/emerald-dress

Accessories for Embroidery Machines

Multiple Spool Holder



008 983 75 00

C

The Multiple Spool Holder offers quick access to threads as well as thread changes, which is especially useful for multi-colored embroidery designs. The path from the telescopic thread stand to the needle is also longer, allowing difficult yarns to untangle before being sewn.



bernina.com/multiple-spool-holder

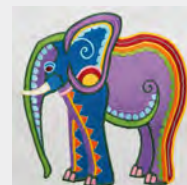
Multiple Spool Holder Extension



008 979 71 00

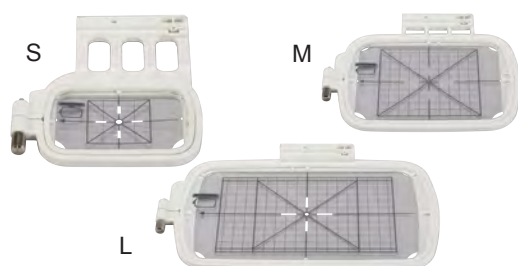
C

By using the practical extension, additional spools can be placed.



bernina.com/multiple-spool-holder-extension

Chicago Embroidery Hoops



These embroidery hoops are helpful aids for the precise creation of small up to large embroidery projects. Due to the template with a practical grid, the embroidery project can be placed accurately.

Embroidery area:

S: 4 x 4 cm

M: 10 x 10 cm

L: 11 x 17 cm

502 020 87 32

B2

S

502 020 87 33

B2

M

502 020 87 31

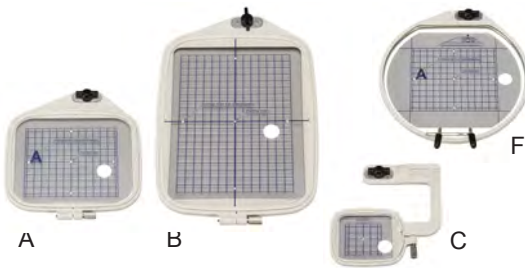
B2

L



Accessories for Embroidery Machines

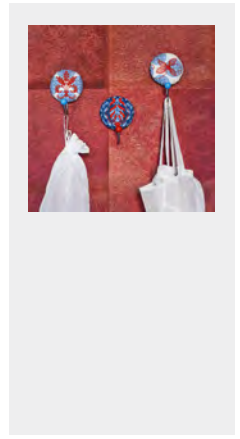
Deco340 Embroidery Hoops



These embroidery hoops are helpful aids for the precise creation of small up to large embroidery projects. Due to the template with a practical grid, the embroidery project can be placed accurately.

Embroidery area:

- A: 12.6 x 11 cm
- B: 14 x 20 cm
- C: 5 x 5 cm
- F: 12.6 x 11 cm



502 060 04 82	C	A
502 060 04 51	C	B
502 060 00 23	C	C
502 060 06 03	C	F

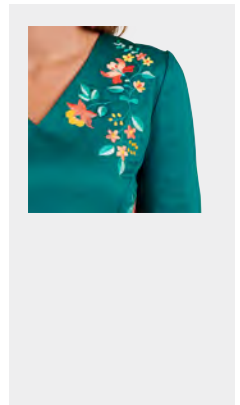
b70 Series Embroidery Hoops



These embroidery hoops are helpful aids for the precise creation of small up to large embroidery projects. Due to the template with a practical grid, the embroidery project can be placed accurately.

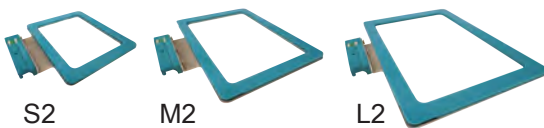
Embroidery area:

- S: 5 x 7 cm
- M: 12 x 18 cm
- L: 16 x 26 cm



502 020 93 16	G1,3	S
502 020 93 17	G1,3	M
502 020 93 18	G1,3	L

Magnetic Embroidery Hoop



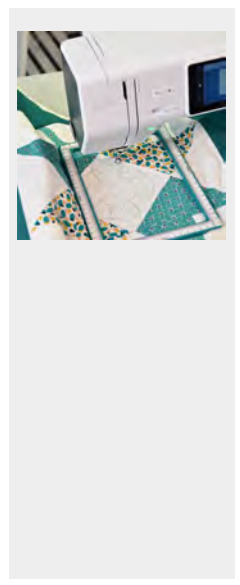
The Magnetic Embroidery Hoop Snap Hoop Monster is the strong helper when it gets tricky when embroidering. Especially for embroidery projects with delicate fabrics such as velvet, leather or vinyl, the Magnetic Embroidery Hoop Snap Hoop is the appropriate choice. The Snap Hoop holds the fabric securely in place without leaving any unwanted pressure marks. Once an area is embroidered, the fabric can be easily and conveniently re-hooped. Because of its easy handling, even more bulky items such as jackets, caps or shorts can be comfortably hooped in the Snap Hoop.

Embroidery area:

- S2: 10 x 10 cm
- M2: 13 x 18 cm
- L2: 14 x 26 cm

502 021 03 99 [■]	G1,3	S2
502 021 03 97 [■]	G1,3	M2
502 021 03 98 [■]	G1,3	L2

■ Snap Hoop Monster

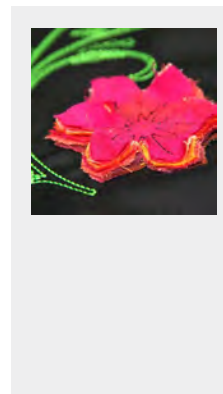


Accessories for Embroidery Machines

BERNINA CutWork Tool



The BERNINA CutWork Tool turns the bernette embroidery machine into a precise cutting tool that can be used to cut out great motifs, which can then be arranged to create decorative and multi-layered embroidery designs. Embroidery combined with CutWork motifs inspires and achieves captivating effects. For successful start, the BERNINA Embroidery Software version 8 or higher is required along with the CutWork Tool. The BERNINA Embroidery Software 8 and the corresponding are compatible with the b70 DECO, the b79, the Chicago 7 (from V 1.62), the Deco 340 (from V 1.1) and the Deco 340plus.



502 020 93 22

B2 C

G1,3

033 375 72 00

B2 C

G1,3

CutWork Needles, 2 pcs.



Software



www.bernette.com/emerald-dress

Software

BERNINA Embroidery Software 9



DESIGN YOUR DREAMS – CREATE YOUR IDEAS – CONNECT YOUR WORLD!

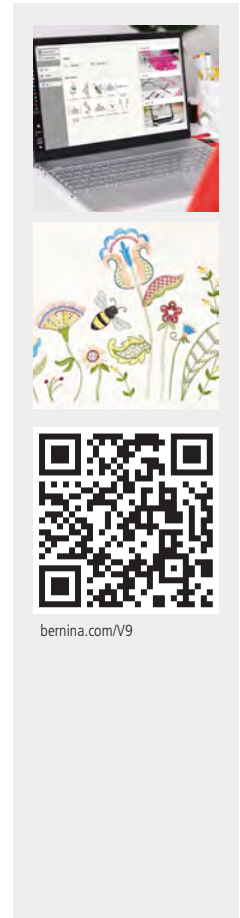
BERNINA Embroidery Software 9 the new software developed for long-time embroidery enthusiasts as well as for embroidery beginners. It opens the doors to outstanding and creative embroidery.

The DesignerPlus offers all the great, new and amazing embroidery features for creative minds who love to design unique motifs.

The Creator is the starter product to access the world of embroidery. The new digitalization tools such as welding and branching provide a quick way to make dreams come true. Additional fonts as well as the new keyboard embroidery design collection offer unlimited possibilities to create designs with alphabets.

Not only new, but also awesome is the ability to transfer an embroidery design from your computer to your embroidery machine via WiFi.

Why not try it out? Download a free trial version of the BERNINA Embroidery Software 9 for 30 days at www.bernina.com/V9.



bernina.com/V9

105 716 50 00 [■]		C	G1,3	DesignerPlus Full Version (incl. BERNINA WiFi device)
105 716 50 01 [■]		C	G1,3	Version update for versions 6, 7 and 8 (incl. BERNINA WiFi Device)
105 716 50 02 [■]		C	G1,3	Upgrade for V9 Creator (incl. BERNINA WiFi Device)
105 716 50 04	B2	C	G1,3	Creator Full Version
105 717 50 00		C	G1,3	BERNINA WiFi Device
105 716 50 20	B2	C	G1,3	DesignerPlus Full Version
105 716 50 21	B2	C	G1,3	Version Update for Versions 6, 7 and 8
105 716 50 22	B2	C	G1,3	Upgrade for V9 Creator

[■] available only in USA/Canada

Software

BERNINA Toolbox



BERNINA Toolbox – The right tool for every embroidery project

Ideal for those first steps into the world of embroidery, the BERNINA Toolbox software will wow you with its simplicity and intuitive operation. It offers a wide range of embroidery motifs and lettering options.

The BERNINA Toolbox consists of individual modules that can be combined as wished, depending on your intended application. The software can be installed on computers running on either Mac or Windows operating systems.

You'll find the embroidery motif library in the BERNINA Cloud, the web service where embroidery motifs are displayed, saved and edited. The website www.berninacloud.com gives you access to the contents of the Toolbox via your PC, smartphone or tablet, letting you edit embroidery motifs any time, anywhere. To embroider the motifs, simply download them in the desired embroidery format.

In principle, the BERNINA Toolbox can be installed on any number of devices, although the software may be used simultaneously on no more than two. The software licenses are easy to activate and deactivate, allowing for flexible use.

A 30-day trial version is available for free download at www.bernina.com/toolbox-trial.



bernina.com/toolbox-bundle

101 425 70 01	B2	C	G1,3	Lettering Basic
101 425 70 00	B2	C	G1,3	Editing
101 425 70 02	B2	C	G1,3	Lettering
101 425 70 03	B2	C	G1,3	Monogramming
101 425 70 04	B2	C	G1,3	Bundle
101 425 70 05	B2	C	G1,3	30-day trial version



Accessories for Overlockers/Sergers



www.bernette.com/yellow-shirt

Machine Overview Overlockers

Category A

- 1 b42 FUNLOCK
- 2 b44 FUNLOCK
- 3 b48 FUNLOCK



Category B

- 1 b62 AIRLOCK
- 2 b64 AIRLOCK
- 3 b68 AIRLOCK

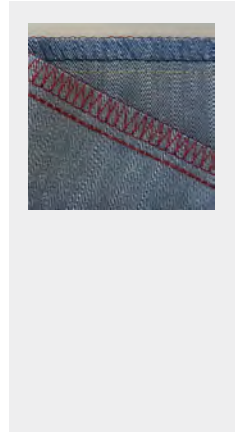


General sewing

Standard Presser Foot



The Standard Presser Foot is a faithful helper for everyday overlock and coverstitch work.

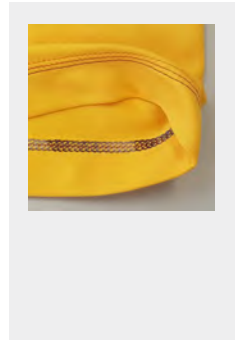


502 040 60 24	A1	B1
502 040 51 06	A2	
502 040 51 07	A3	
502 040 55 77	B2,3	

Standard Presser Foot with Clear Sole



The clear sole provides an optimal view of the sewing project; ideal for decorative seams which have been marked beforehand and precise positioning at the beginning or end of the seam.

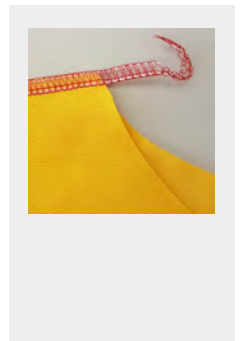


502 040 60 26	A1,3	B1,3
----------------------	------	------

Ribbon–Couching Foot



To sew on narrow ribbons and tapes. With the help of the adjustable guide, ribbons and tapes of different widths can be precisely guided into the seam.



502 040 60 17	A2,3	B2,3
----------------------	------	------

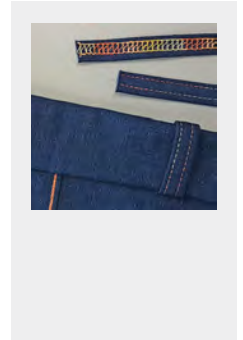
General sewing

Belt-Loop Foot



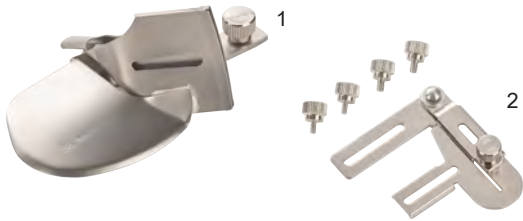
502 040 51 10 A1,3 B1,3

The Belt-Loop Foot is used to fold bias tapes or straight strips to create straps or belt loops, sewn quickly and easily with the coverstitch or chainstitch.



Hems and Topstitching

Double Fold Binder Attachment #C21



Due to the top bottom double fold binder attachment, fabric edges and necklines can be perfectly bordered with bias tape. The unfolded tape is inserted through the attached guide rail, folded over twice on the upper and lower sides of the bias tape and sewn on with a cover or chain stitch. For the perfect look, the bias tape can also be self-made. Tapes of 36 mm width result in a finished width of approx. 10 mm. An attachment adapter is required to use the binder attachment.

C21	103 786 70 00	A1,3	B1,3
	103 788 70 00	A1,3	B1,3

- 1) 10/36 mm
- 2) Accessories Holder



Single Fold Binder Attachment #C22



With the single fold binder attachment, fabric edges and necklines can be perfectly bordered with bias tape. The unfolded tape is inserted through the attached guide rail, folded over on the upper side while the under side remains open, and is then sewn on with a cover stitch. For the perfect look, the bias tape can also be self-made. Tapes of 40 mm width result in a finished width of approx. 10 mm. An attachment adapter is required to use the binder attachment.

C22	104 836 70 00	A1,3	B1,3
	103 788 70 00	A1,3	B1,3

- 1) 10/40 mm
- 2) Accessories Holder

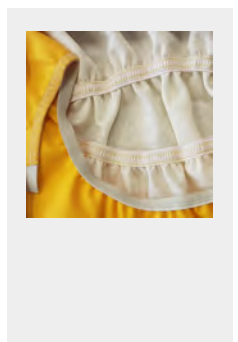


Elasticator Foot



For sewing projects with elastic tapes, the Elasticator Foot is best suited. It succeeds in evenly gathering the fabric and accurately sewing in the elastic on home textiles, swimwear and sportswear. The Elasticator Foot also masters the professional creation of lingerie optimally.

502 040 60 22	A	B
----------------------	---	---



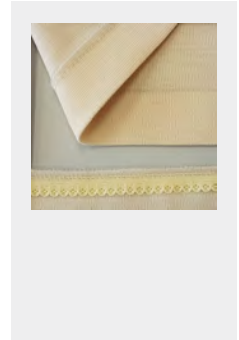
Hems and Topstitching

Blindstitch Foot



502 040 55 73 A2,3 B2,3

This foot is a specialist when it comes to working with blind hems. In one operation, the hem is sewn and the edge is finished. Therefore, the blindstitch foot facilitates quick and neat stitching and is perfect for sewing attractive blind hems on home textiles and garments.

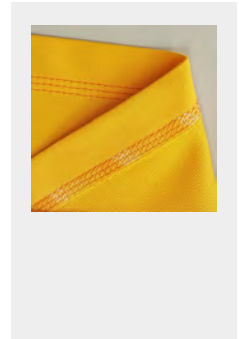


Hemmer Foot



502 040 60 29 A1,3 B1,3

The Hemmer Foot is used to easily and quickly sew even hems of 2.5 cm in width. A narrow or wide coverstitch can be used to finish the cut edge.

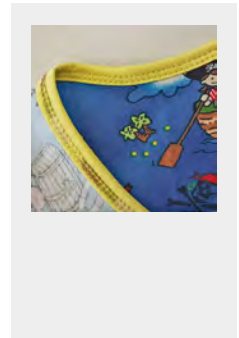


Binder Attachment for Unfolded Bias Tape



502 040 60 28 A1,3 B1,3

This Binder Attachment creates practical edge finishes using unfolded bias tape of 40 up to 50 mm in width. For the professional look, the bias tape can also be self-created.



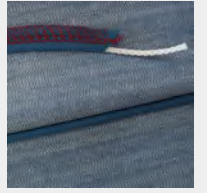
Decorative Sewing

Piping Foot



502 040 60 19 A2,3 B2,3

The Piping Foot is suitable for preparing or sewing in piping or both in one single sewing operation. This is how highlights are added to home textiles or clothing.



Beading and Sequins Foot



502 040 60 20 A2,3 B2,3

For creative work with beaded or sequined ribbons up to a width of 4 mm. The groove on the side serves as a guide and is useful when sewing on cords.



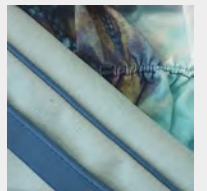
Cording Foot



502 040 60 25 A1,3 B1,3[■]

■ B1: Guiding plate not compatible

This presser foot guides decorative cords and fine cords up to a diameter of 2 mm exactly and precisely under the coverstitch seam when sewing them on. As an alternative, it can also be used to create and to sew in piping.

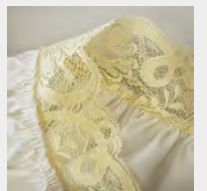


Gathering Foot



502 040 55 72 A2,3 B2,3

The Gathering Foot allows individual layers of fabric to be gathered evenly. Likewise, a layer of fabric can be gathered and sewn together to a flat piece of fabric. This saves a great deal of time.



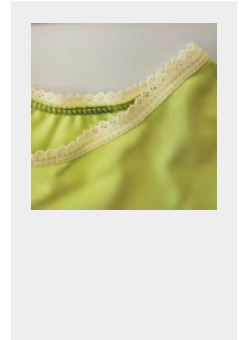
Decorative Sewing

Lace Foot



502 040 60 27 A1,3 B1,3

To sew on lace, trims and ribbons on hems. The bottom edge of the fabric is simultaneously neatened with a narrow or wide coverstitch, creating a flat joining seam.

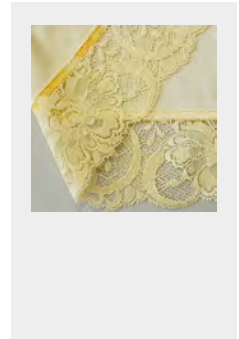


Hemmer and Lace Foot



502 040 60 31 A1,3 B1,3

This presser foot sews on ribbons or lace below a fabric edge which is simultaneously folded to form a hem. A coverstitch finishes both edges at the same time. In doing so, the material is folded by 1 cm.



Presser Foot Sets

Presser Feet Set Cover/Combo



502 040 60 32 A1,3 B1,3

This set for the bernette cover and combo machines contains 7 practical presser feet for decorative coverstitch seams.

Set Contents

Binder Attachment for Unfolded Bias Tape
 Standard Presser Foot with Clear Sole
 Hemmer and Lace Foot
 Hemmer Foot
 Cording Foot
 Lace Foot
 Belt-Loop Foot



Presser Feet Set Overlock/Combo



502 040 60 23 A2,3 B2,3

This set for the bernette overlockers and combo machines contains 6 practical presser feet which are best-suited for decorative overlock seams.

Set Contents

Ribbon—Couching Foot
 Elasticator Foot
 Blindstitch Foot
 Piping Foot
 Beading and Sequins Foot
 Gathering Foot



Other Accessories

Cut-Offs Bin



502 040 51 24 A2,3

502 040 55 37 B1,2,3

The Cut-Offs Bin can be easily fitted to the machine. It catches fabric scraps or thread chains and helps keep your workspace clean at all times.



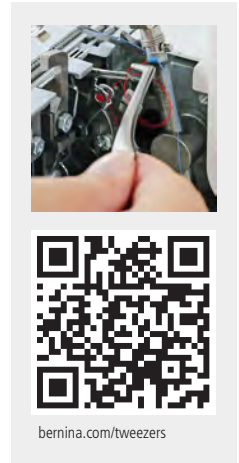
BERNINA Tweezers



031 564 52 00 A B C D E F G

▪ Does not fit in the accessories holder in the looper cover.

The BERNINA tweezers make threading the overlocker effortless. Thread remnants still remaining in the machine can be removed with it.



bernina.com/tweezers

CS Lock Tool



104 050 70 00 A B C D E F G

With the CS-Lock Tool, the needle threads can be pulled between foot and stitch plate easily. This eases cutting and locking the cover- and chainstitch. The scale serves as tool to measure hems, seams or mark fabrics. The scale can additionally be used to adjust the seam guide. The CS lock tool is made of soft plastic which is gentle on thread and fabric.



bernina.com/coverstitch-lock-tool

Other Accessories

Carrying Case for Overlockers/Sergers



502 010 72 00 A

Keeps your overlocker in tip-top condition when traveling, and protects it when not in use.



XL Trolley System



036 180 70 00

G

The practical trolley and embroidery-module bag are very sturdy, and are perfect for transporting your machine when you're on the go. Numerous inner and outer pockets offer plenty of room for accessories. Robust wheels and an extendable telescopic handle allow you to pull your sewing machine and attached embroidery module behind you with ease. The side handles are also convenient when loading and unloading the bags. The embroidery-module bag can be attached to the trolley's telescopic handle or carried separately with the adjustable shoulder strap.



bernette for all my ideas



Not all accessories are available in all countries. Modifications of the product range and the function of individual articles are reserved. For more information, visit www.bernette.com and contact your bernette dealer.

